



ASCENDO

***THE LEGEND RISES
BE BOLD BE STRONG***





ASCENDO

S2000

Size	Type	LIP	STD. Rim	O.D. mm	S.W. mm	Weight (kg) Black	Load Capacity (kg)				
							Forklift		Others		
							Load	Steer	Up to 6km/h	Up to 10km/h	Up to 25km/h
15x4-1/2-8	Solid	✓	3.00D	380	109	9.70	1040	800	1040	945	800
16x6-8	Solid	✓	4.33R	414	141	16.50	1495	1150	1495	1360	1150
5.00-8	Solid	✓	3.00D	453	115	16.40	1415	1090	1415	1285	1090
18x7-8	Solid	✓	4.33R	451	148	20.80	2145	1650	2145	1945	1650
140/55-9	Solid	✓	4.00E	382	130	11.00	1170	900	1170	1060	900
6.00-9	Solid	✓	4.00E	528	141	28.00	1885	1450	1885	1710	1450
21x8-9	Solid	✓	6.00E	523	186	35.40	2755	2120	2755	2500	2120
200/50-10	Solid	✓	6.50F	461	195	24.90	2470	1900	2470	2240	1900
6.50-10	Solid	✓	5.00F	574	157	36.50	2340	1800	2340	2125	1800
23x9-10	Solid	✓	6.50E	587	199	49.10	3445	2650	3445	3125	2650
7.00-12	Solid	✓	5.00S	655	170	49.40	2920	2240	2920	2645	2240
23x10-12	Solid	✓	8.00G	592	237	52.60	3770	2900	3770	3420	2900
27x10-12	Solid	✓	8.00G	677	237	75.50	3900	3000	3900	3540	3000
6.00-15	Solid		4.50E	697	151	43.00	2455	1820	2455	2095	1820
7.00-15	Solid		5.50	739	170	57.70	3545	2725	3545	3215	2725
7.50-15	Solid		6.00	765	194	74.20	3900	3000	3900	3540	3000
	Solid		6.50	765	194	74.50	3900	3000	3900	3540	3000
28x9-15	Solid	✓	7.00	692	208	59.50	3900	3000	3445	3540	3000
250-15 (250/70-15)	Solid	✓	7.00	711	222	69.00	4745	3650	4745	4310	3650
	Solid	✓	7.50	711	222	69.40	4745	3650	4745	4310	3650
8.25-15	Solid	✓	6.50F	813	198	91.50	4750	3650	4750	4300	3650
300-15 (315/70-15)	Solid	✓	8.00	811	255	109.00	5850	4500	5850	5310	4500
7.50-16	Solid	✓	6.00	789	185	76.60	3950	3600	3.950	3050	4605
9.00-20	Solid		7.00	1013	229	151.40	5400	4500	5400	4905	4500
	Solid		7.50	1013	230	152.00	5400	4500	5400	4905	4500
10.00-20	Solid		7.50	1030	250	171.50	6000	5000	6000	5450	5000
	Solid		8.00	1030	250	172.20	6000	5000	6000	5450	5000
12.00-20	Solid		8.00	1100	280	227.00	7560	6300	7560	6865	6300
	Solid		8.50	1100	280	227.00	7560	6300	7560	6865	6300
4.00-8	Solid	RIB	37.5D	404	112	11.30	950	730	950	860	730
10.00-20	Solid	Smooth	7.50	1016	225	171.50	6000	5000	6000	5450	5000
	Solid	Smooth	8.00	1016	251	155.50	6000	5000	6000	5450	5000

TREAD LAYER

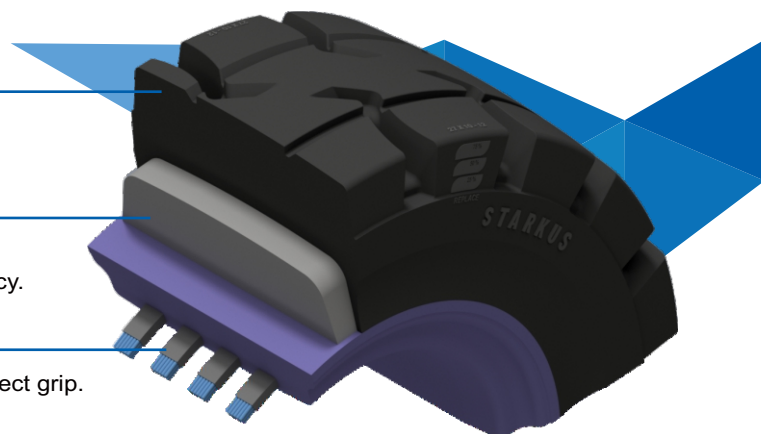
Designed to endure wear and abrasions while at the same time provides high durability and tear resistance during work.

CENTER LAYER

Natural rubber compound provides low heat buildup, rolling resistance, deflection without reducing its softness and pliancy.

BASE LAYER

Combined with steel reinforced rings for stability and perfect grip.



Special Features of Ascendo Solid Resilient Tires :



Cut Resistance

Reduces chunking and cutting on rough and jagged surfaces



Heat Resistance

Continuous operation ensured by low built-up structure compound



Mileage

Wide tread and maximum volume of the wear-resistant compound for



Cushion

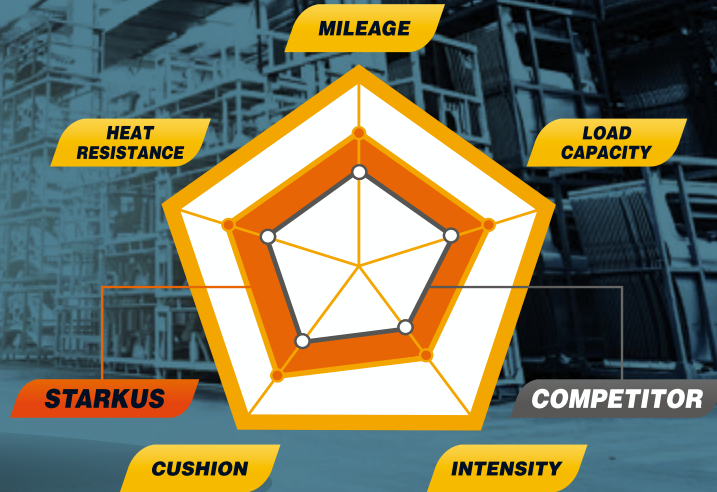
Shock absorbance and enhanced driver comfort

ASCENDO

BE BOLD BE STRONG



STARKUS®



S 3000

Size	Type	LIP	STD. Rim	O.D. mm	S.W. mm	Weight (kg)		Load Capacity (kg)				
						Black	Grey	Forklift		Others		
								Load	Steer	Up to 6km/h	Up to 10km/h	Up to 25km/h
15x4.5-8	Solid	✓	3.00D-8	380	111	9.80	9.70	1040	800	1040	945	800
16x6-8	Solid	✓	4.33F-8	414	418	15.80	16.20	1495	1150	1495	1360	1150
5.00-8	Solid	✓	3.00D-8	452	120	15.90	16.30	1415	1090	1415	1285	1090
18x7-8	Solid	✓	4.33R-8	450	153	20.55	21.20	2145	1650	2145	1945	1650
6.00-9	Solid	✓	4.00	525	145	27.10	27.50	1885	1450	1885	1710	1450
21x8-9	Solid	✓	6.00E-09	522	185	35.00	35.40	2755	2120	2755	2500	2120
140/55-9	Solid	✓	4.00E-09	382	130	10.75	11.30	1170	900	1170	1060	900
200/50-10	Solid	✓	6.50F-10	460	198	25.00	25.40	2470	1900	2470	2240	1900
6.50-10	Solid	✓	5.00	572	162	36.00	36.00	2340	1800	2340	2125	1800
23x9-10	Solid	✓	6.50F-10	582	203	48.00	48.80	3445	2650	3445	3125	2650
7.00-12	Solid	✓	5.00	655	173	48.80	49.00	2920	2240	2920	2645	2240
23x10-12	Solid	✓	8.00G-12	588	238	52.50	53.30	3770	2900	3770	3420	2900
27x10-12	Solid	✓	8.00G-12	676	246	75.50	76.50	3900	3000	3900	3540	3000
6.00-15	Solid		4.50E-15	690	153	43.00	43.80	2455	1820	2455	2095	1820
7.00-15	Solid	✓	5.50-15	733	171	57.60	57.70	3545	2725	3545	3215	2725
28x9-15	Solid	✓	7.00	688	212	59.20	60.10	3445	2650	3445	3125	2650
8.25-15	Solid	✓	6.50F-15	810	208	91.00	91.70	4750	3650	4750	4300	3650
250-15 _(250/70-15)	Solid	✓	7.00	715	225	69.00	70.40	4775	3650	4775	4310	3650
	Solid		7.50	715	225	69.40	70.90	4775	3650	4775	4310	3650
300-15 _(315/70-15)	Solid	✓	8.00-15	802	255	109.50	110.00	5850	4500	5850	5310	4500
355/45-15	Solid	✓	9.75	688	300	80.00	81.20	5690	4375	5690	5165	4375
355/50-15	Solid	✓	9.75	712	300	89.00	90.30	5690	4375	5690	5165	4375
355/65-15	Solid	✓	9.75	818	310	130.00	132.00	7800	6000	7085	6430	5450
11.00-20	Solid		7.50	1072	275	211.00	214.20	6540	5450	6540	5940	5450
	Solid		8.00	1072	275	211.25	214.40	6540	5450	6540	5940	5450

Starkus Solid Resilient Tires



SUSTAINABLE REINFORCED COMPOUND

MULTI FUNCTIONAL

Multi Functional :

Super reinforced compound with excellent cut and rolling resistance. Reduces chunking and cutting on rough and jagged surfaces.

ANTI STATIC

Anti Static :

Specialized black compound to enhance safety in ammable and explosive environments. This compound discharges electricity and avoids spark generation.

PRIME REINFORCEMENT

Prime Reinforcement :

Wide tread and maximum volume of the wear resistance coumpound for extra mileage and shock absorbency and enhanced driver comfort.

HEAT RESISTANCE

Heat Resistance :

Continuous operation ensured by low build-up structure compound. Super premium compound designed to resist the high ambient temperatures.

NON MARKING

Non Marking :

A premium compound designed to keep oors free of carbon black even under continuous utilization

STARKUS



ASCENDO

PT. ARAMI JAYA

Jl. Karet 4 Blok H 35 Batik Village 17550 West Java INDONESIA

© 2024 Ascendo solid tires all right reserved.
Ascendo solid tires reserves the right to change and or discontinue any specification, design,
feature, models and accessories shown without prior notice.